

- April 22<sup>nd</sup> 23<sup>rd</sup> 1892 -

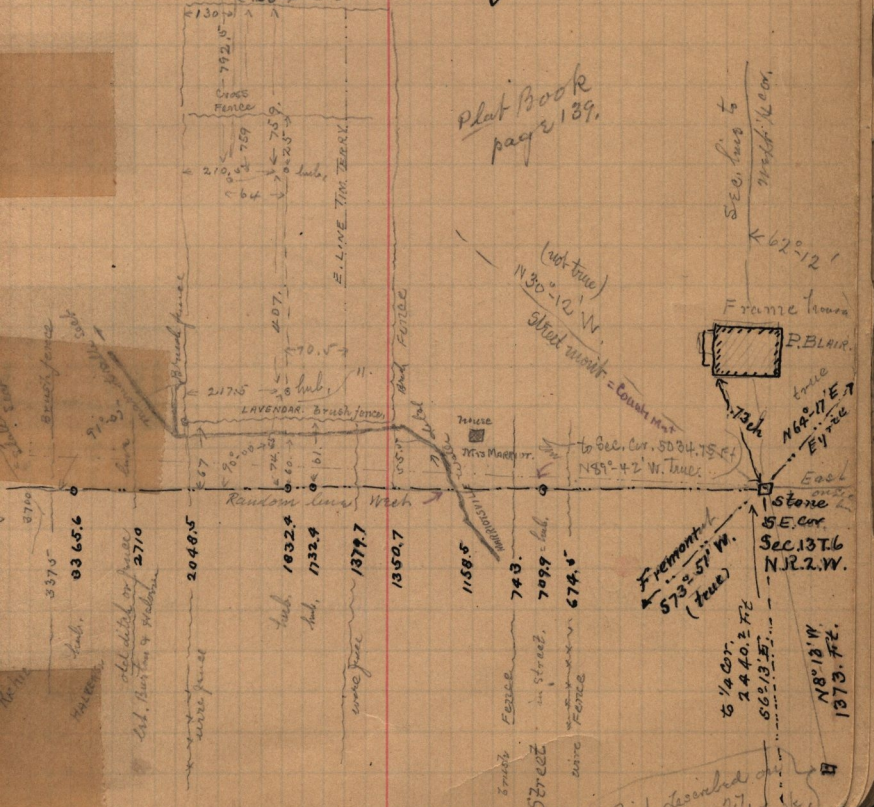
Survey for Geo. Lavender

Self & John Baird chainmen  
Roc 100 ft Tapes.

Deed - P-370, Valer Co. Records.

James W. Burton to George Lavender, Feb 1<sup>st</sup> 1876

Part of the S.E. 1/4 Sec 13, T. 6. N. R. 2. W. Bg. 9. 15 ch E. of  
0.75 of a ch N. of S.W. cor. of said 1/4 Sec. - thence North  
0<sup>o</sup>-30' 18.33 ch. to Middle of street, thence S 89<sup>o</sup> 45' E,  
10.58 ch - S 0<sup>o</sup>-30' W 18.33 ch. - N 89<sup>o</sup> 45' W, 10.54 ch  
to beg. 19.35 ch



Plat Book  
page 139.

SEC. 13 T. 6 N. R. 2 W. COR.  
62-12

FRAME HOUSE  
P. BLAIR  
true  
N 68-17 E  
E.V. REC. 7  
73 ch

STONE  
SE COR  
SEC. 13 T. 6  
N. R. 2. W.  
FREMONT ST  
573-51 W  
(true)

to 1/4 COR.  
2440.2 FT  
66-13 E  
N 8-13 W  
1373 FT.

Point decided on  
page 27,  
tho page